

ELBOW

Elbow Extension Dynasplint® System (EED)

Range of Motion:
65° flexion to 25° hyperextension

Elbow Flexion Dynasplint® System (EFD)

Range of Motion:
50° flexion to 140° flexion

Elbow Extension Neurological Dynasplint® System (EED-N)

Range of Motion:
130° flexion to 40° flexion

Common Neuro Diagnoses:

Head trauma and spinal cord injuries, Cerebral palsy (CP), Cerebral vascular accident (CVA), Other neurological conditions

WRIST

Wrist Extension Dynasplint® System (WED)

Range of Motion:
0° neutral to 90° extension

Wrist Flexion Dynasplint® System (WFD)

Range of Motion:
0° neutral to 90° flexion

Wrist Extension Neurological Dynasplint® System (WED-N)

Range of Motion:
45° flexion to 45° extension

Wrist Extension Neurological Dynasplint® System (WED-MOD)

Range of Motion:
65° flexion to 25° extension

Common Neuro Diagnoses:

Head trauma and spinal cord injuries, Cerebral palsy (CP), Cerebral vascular accident (CVA), Other neurological conditions

HAND

MCP Extension Dynasplint® System (MCP-ED)

Range of Motion:
45° flexion to 45° extension

MCP Flexion Dynasplint® System (MCP-FD)

Range of Motion:
0° neutral to 90° flexion

Common Neuro Diagnoses:

Head trauma and spinal cord injuries, Cerebral palsy (CP), Cerebral vascular accident (CVA), Other neurological conditions

FINGER

PIP Extension Dynasplint® System (PIP-E)

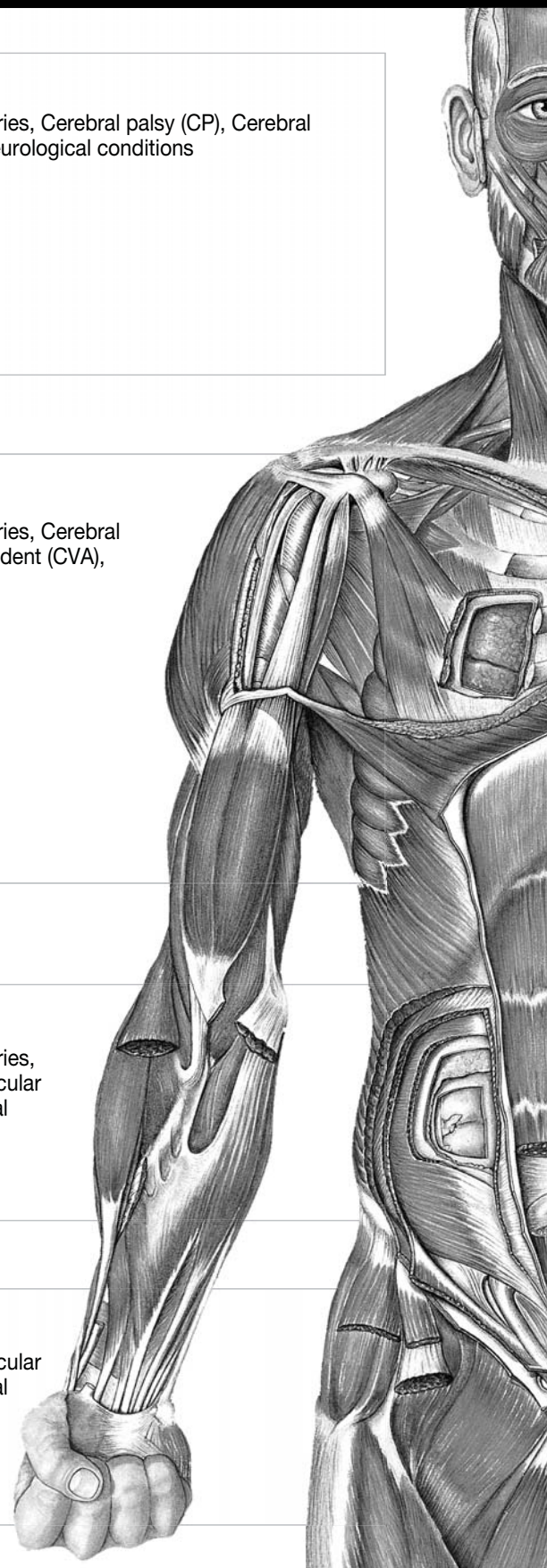
Range of Motion:
65° flexion to 25° hyperextension

PIP Flexion Dynasplint® System (PIP-F)

Range of Motion:
10° flexion to 100° flexion

Common Neuro Diagnoses:

Cerebral palsy (CP), Cerebral vascular accident (CVA), Other neurological conditions



How to order a Dynasplint System?

Step 1: Call our toll-free number and ask for your local sales consultant

Step 2: Fax the following information:

Patient information | Insurance information (copy of the insurance card)

Most recent chart notes | Rx and the Certificate of Medical Necessity (CMN)

Corporate Headquarters

800.638.6771 toll-free

800.380.3784 fax

www.dynasplint.com

Neurological Division

877.738.0511 toll-free

888.738.1732 fax

www.dynasplint.com

Canada

800.668.9139 toll-free

905.851.3494 fax

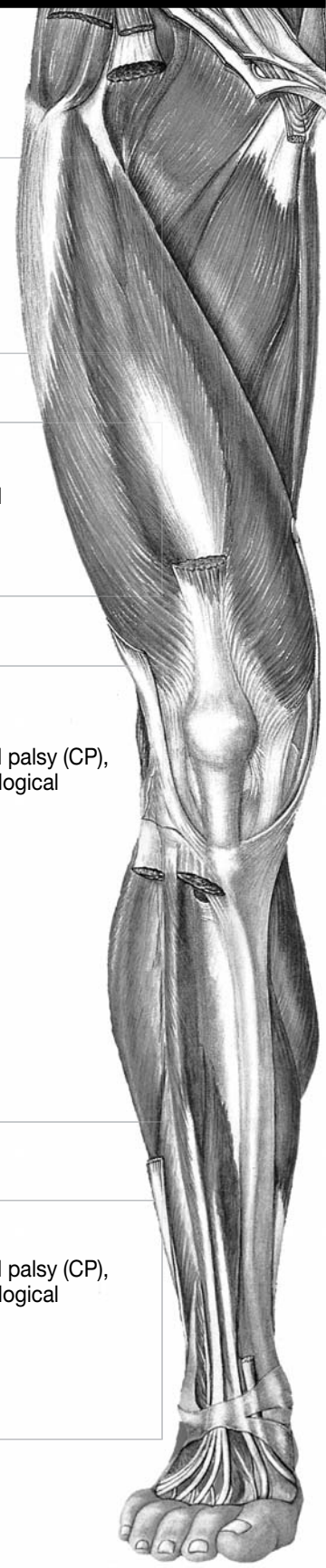
www.dynasplint.ca

Europe

+31.45.523.0418 tel

+31.45.523.1303 fax

www.dynasplint.nl



SHOULDER

Shoulder Dynasplint® System (SHD)

Range of Motion:
 flexion 80° to 180° | abduction 0° to 180°
 external rotation 0° to 180° | internal rotation 0° to 180°

Primary Neuro Diagnoses:

Head trauma and spinal cord injuries, Cerebral palsy (CP), Cerebral vascular accident (CVA), Other neurological conditions

Secondary Diagnoses:

Adhesive capsulitis/Frozen shoulders

FOREARM

Forearm Supination/Pronation Dynasplint® System (SUP/PRO)

Range of Motion:
 supination 0° to 180° | pronation 0° to 180°

Common Neuro Diagnoses:

Head trauma and spinal cord injuries, Cerebral palsy (CP), Cerebral vascular accident (CVA), Other neurological conditions

KNEE

Knee Extension Dynasplint® System (KED)

Range of Motion:
 65° flexion to 25° hyperextension

Knee Flexion Dynasplint® System (KFD)

Range of Motion:
 50° flexion to 140° flexion

Knee Extension Neurological Dynasplint® System (KED-N)

Range of Motion:
 130° flexion to 40° flexion

Double-Jointed Knee Extension Dynasplint® System (KED-DJ)

Range of Motion:
 130° flexion to 50° hyperextension

Common Neuro Diagnoses:

Head trauma and spinal cord injuries, Cerebral palsy (CP), Cerebral vascular accident (CVA), Other neurological conditions

ANKLE

Ankle Plantar Flexion Dynasplint® System (PLANTAR)

Range of Motion:
 25° plantar flexion to 115° plantar flexion

Ankle Dorsiflexion Dynasplint® System (ADFD)

Range of Motion:
 50° plantar flexion to 40° dorsiflexion

Common Neuro Diagnoses:

Head trauma and spinal cord injuries, Cerebral palsy (CP), Cerebral vascular accident (CVA), Other neurological conditions